

Pros and Cons of Dual Accreditation

John B. Bulger, DO, FACOI, FACP
Director, Osteopathic Medical Education
Geisinger Health System
AACOM Annual Meeting
June 25, 2004

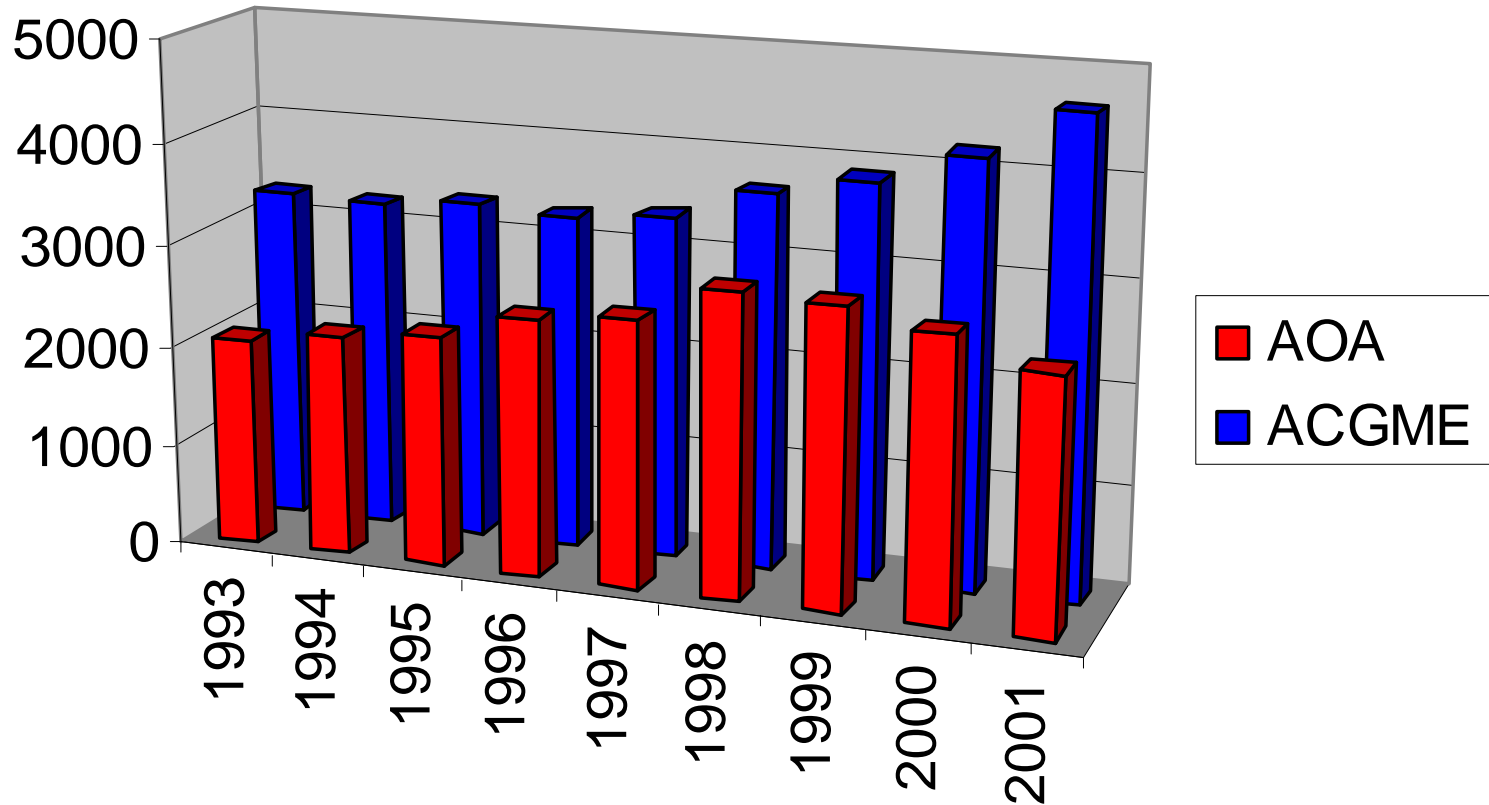
Overview

- Is there a crisis? What do the numbers show?
- What are the pragmatic challenges to getting from here to there?
- Why would a hospital do this?
- Vision for the future – integrated medical education system which maintains osteopathic distinctiveness

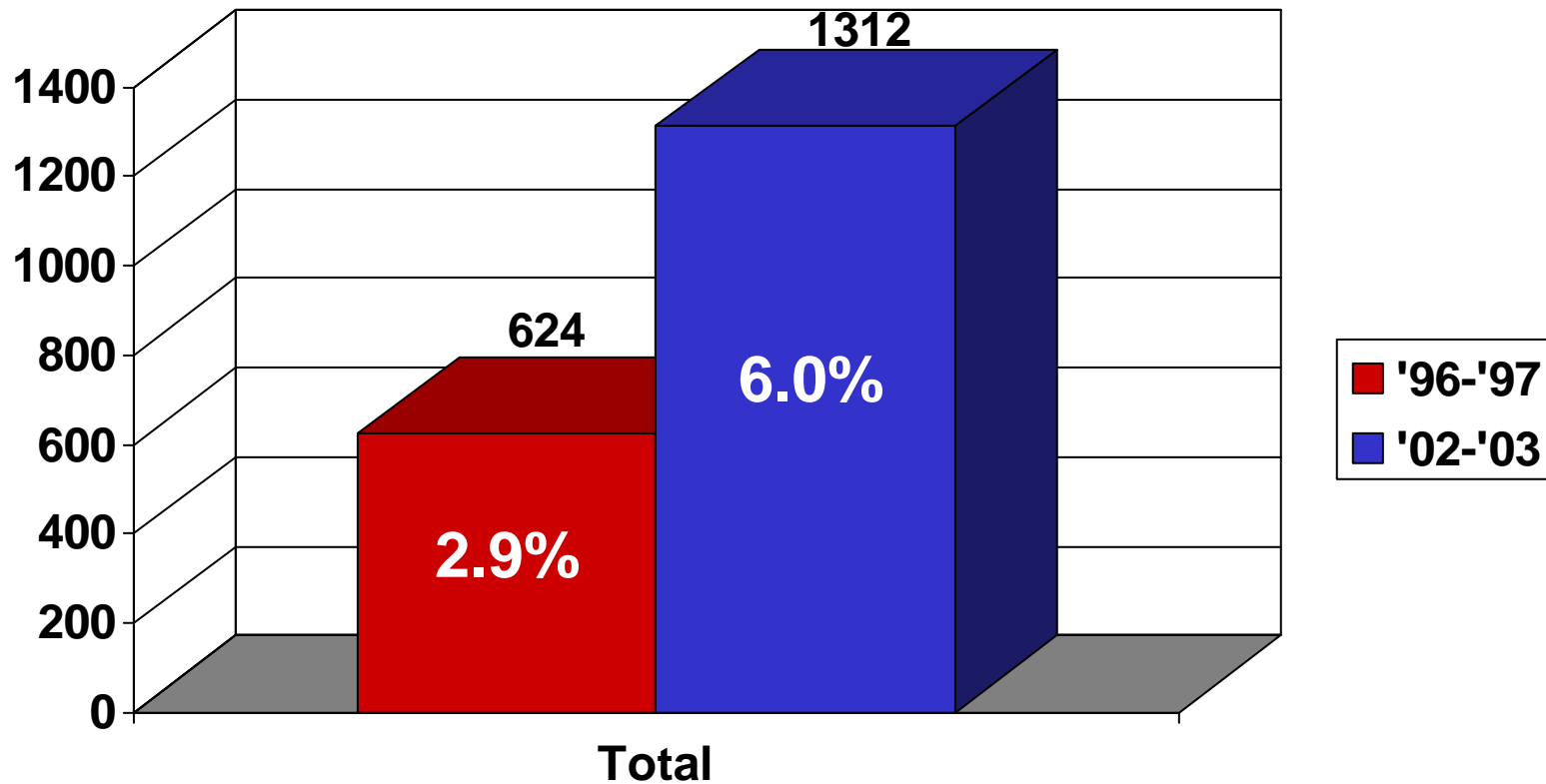
Is there a crisis?

That depends on your
perspective...

Number of DOs in AOA & ACGME Residency Programs Trend for the Years 1993-2001

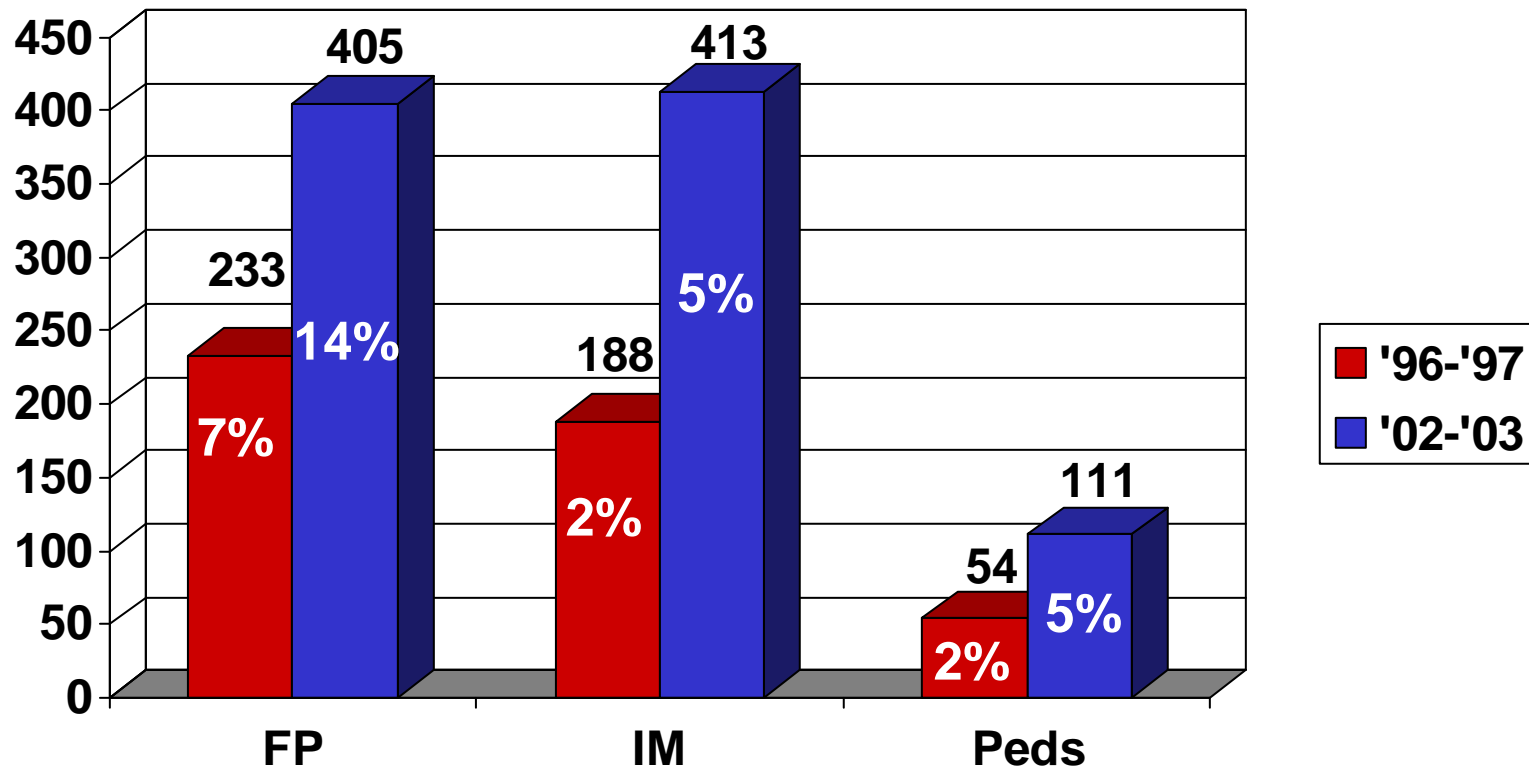


DO's in ACGME programs



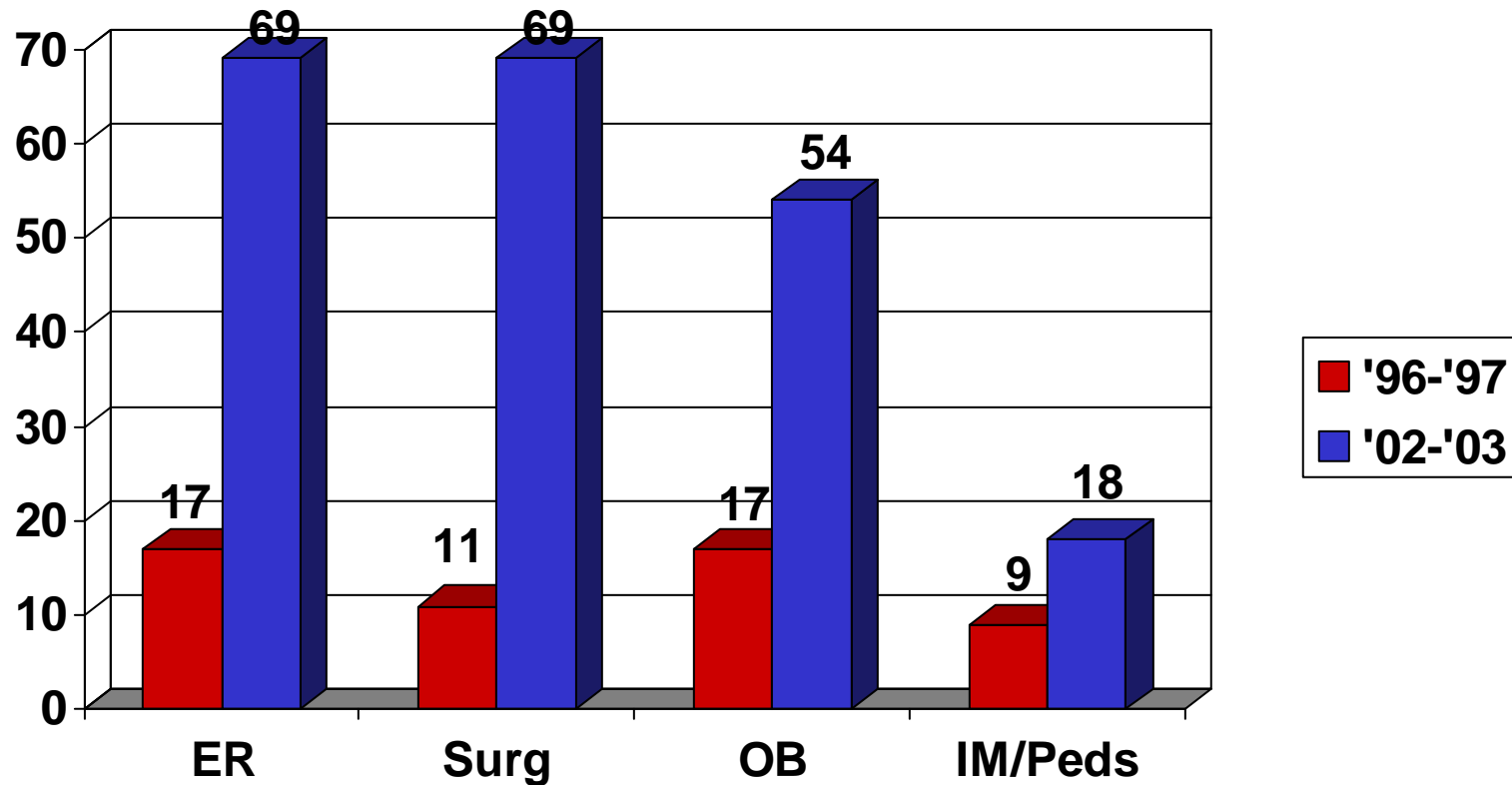
JAMA. 2003;290:1197-1202.

DO's in ACGME programs



JAMA. 2003;290:1197-1202.

DO's in ACGME programs



JAMA. 2003;290:1197-1202.

Overview

- Is there a crisis? What do the numbers show?
- What are the practical challenges to getting from here to there?
- Why would a hospital do this?
- Vision for the future – integrated medical education system which maintains osteopathic distinctiveness

ACGME program fees

- 5 or fewer residents = \$2000
- 6 or more residents = \$2500
- this yearly fee includes institution, site reviews, etc.
- extra charges except for new application fees, appeal fees, etc.

AOA program fees

- \$300 per program
- \$120 per trainee
- PLUS...

OPTI fees

- \$5000 membership fee plus
- \$255 per intern
- \$255 per resident
- PLUS...

Extras

- AOA Dues = \$60 per trainee
- AOA Dues for DME = \$655
- AODME Dues for DME = \$300
- DME Travel to AODME
- COH Dues = \$2500 (optional)

Our Example

IM Program	ACGME Cost	AOA Cost
Program Fee	\$2,500	\$300
AOA/resident		\$1,440
OPTI/resident		\$3,060
AOA Dues		\$720
Total	\$2,500	\$5,520

<u>Item</u>	<u>Number of Trainees/ Programs</u>	<u>Cost per Trainee/ Program</u>	<u>Cost per Item</u>
AOA Program Fees	3	\$300.00	\$900.00
AOA Trainee Fees	43	\$120.00	\$5,160.00
AOA Dues for Trainees	43	\$60.00	\$2,580.00
OPTI Fee	1	\$5,000.00	\$5,000.00
OPTI Trainee Fees	43	\$255.00	\$10,965.00
DOME AOA Dues	1	\$655.00	\$655.00
DOME AODME Dues	1	\$600.00	\$600.00
DOME Travel			\$2,500.00
AOA COH Dues	1	\$2,500.00	\$2,500.00
<u>TOTAL</u>			<u>\$30,860.00</u>

PD requirements

- Internship program directors and residency program directors must be:
 - AOA board certified
 - AOA members
 - Osteopathic specialty college members

Board certification

- 80% rule
- If you have enough DO's – this can be a challenge
 - Year 1 – 1:2, 50%
 - Year 2 – 1:1, 66%
 - Year 3 – 6:6, 89%, but if 5:6, 78%

Overview

- Is there a crisis? What do the numbers show?
- What are the practical challenges to getting from here to there?
- **Why would a hospital do this?**
- Vision for the future – integrated medical education system which maintains osteopathic distinctiveness

Recruitment

What are residency programs looking for?

- Competent communication skills
- Possibility for staff recruitment
- Proven commodity

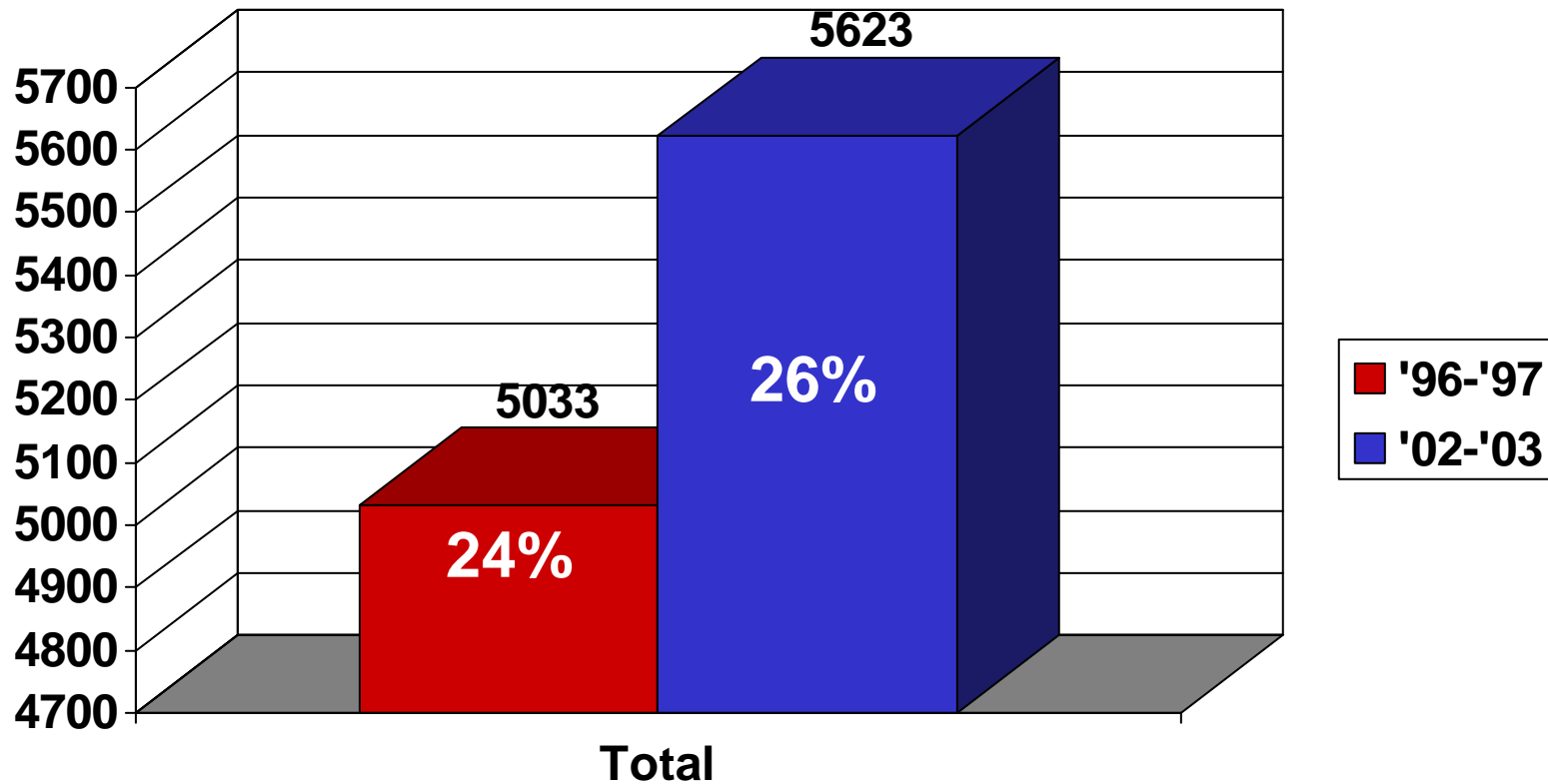
Recruitment

- \$15,000 - \$25,000 for primary care
- Up to \$50,000 for certain specialists

Recruitment

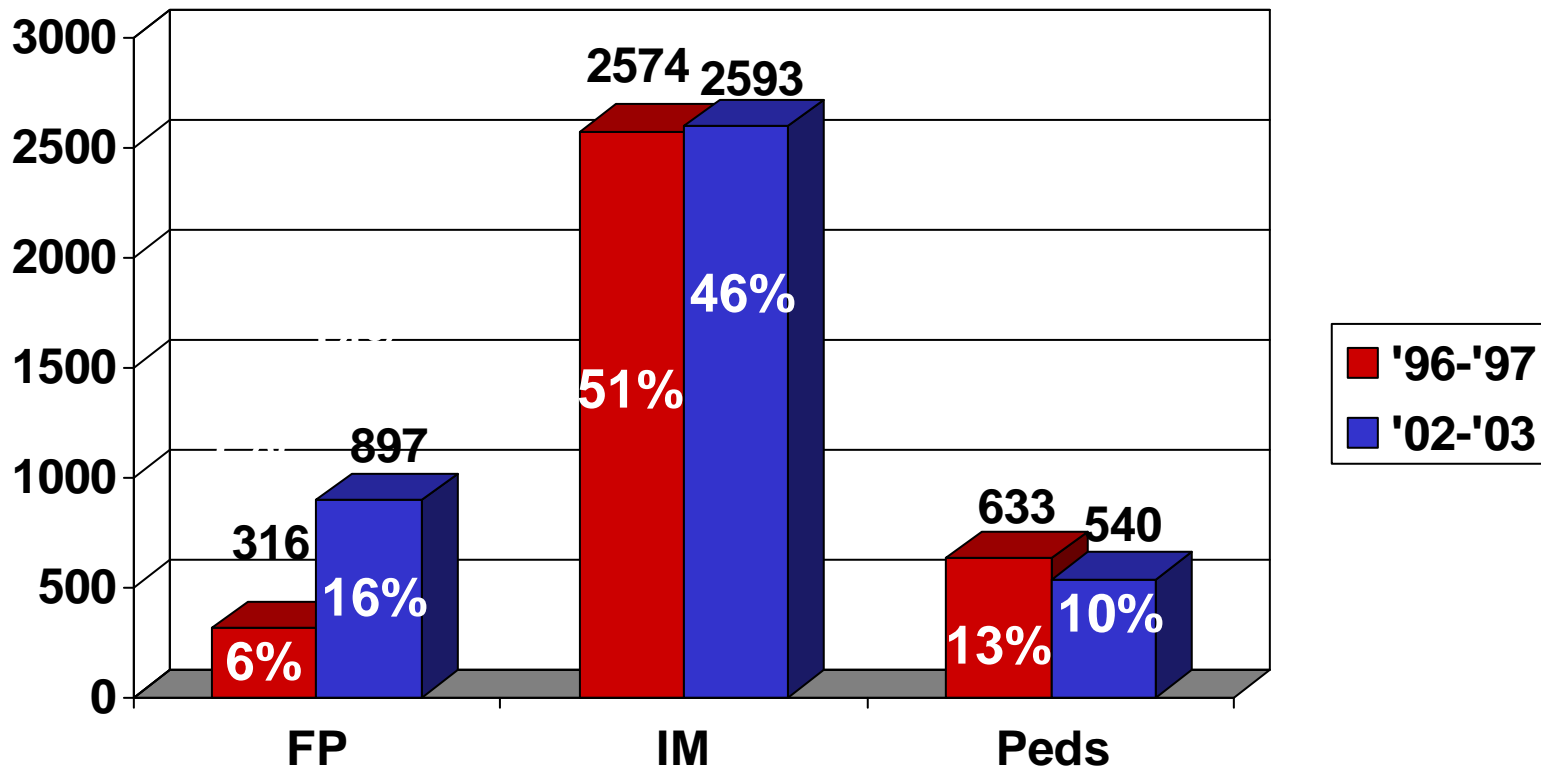
Responses		AOA Internship Residency	ACGME Residency	AOA/ACGME Dual Accredited Internship/Residency	Total
Students	%	5%	10%	83%	98%
	(Number)	(38)	(75)	(601)	714
Interns/Residents	%	10%	8%	81%	99%
	(Number)	(174)	(155)	(1488)	1817

IMG's in ACGME programs



JAMA. 2003;290:1197-1202.

IMG's in ACGME programs



JAMA. 2003;290:1197-1202.

Overview

- Is there a crisis? What do the numbers show?
- What are the practical challenges to getting from here to there?
- Why would a hospital do this?
- **Vision for the future – integrated medical education system which maintains osteopathic distinctiveness**

Geisinger Medical Center

Danville, PA



Geisinger