

A Non-OPTI Osteopathic GME Consortium Strategies for the SAS

Thomas Mohr, DO FACOI FAODME
UIWSOM Associate Dean for GME
DIO - TIGMER

Marsha Sellner
UIWSOM Director of GME
Associate DIO - TIGMER

History of the OPTI

- Established in 1995
- Community-based training consortium including at least one COM and at least one hospital with GME program(s)
- Objectives:

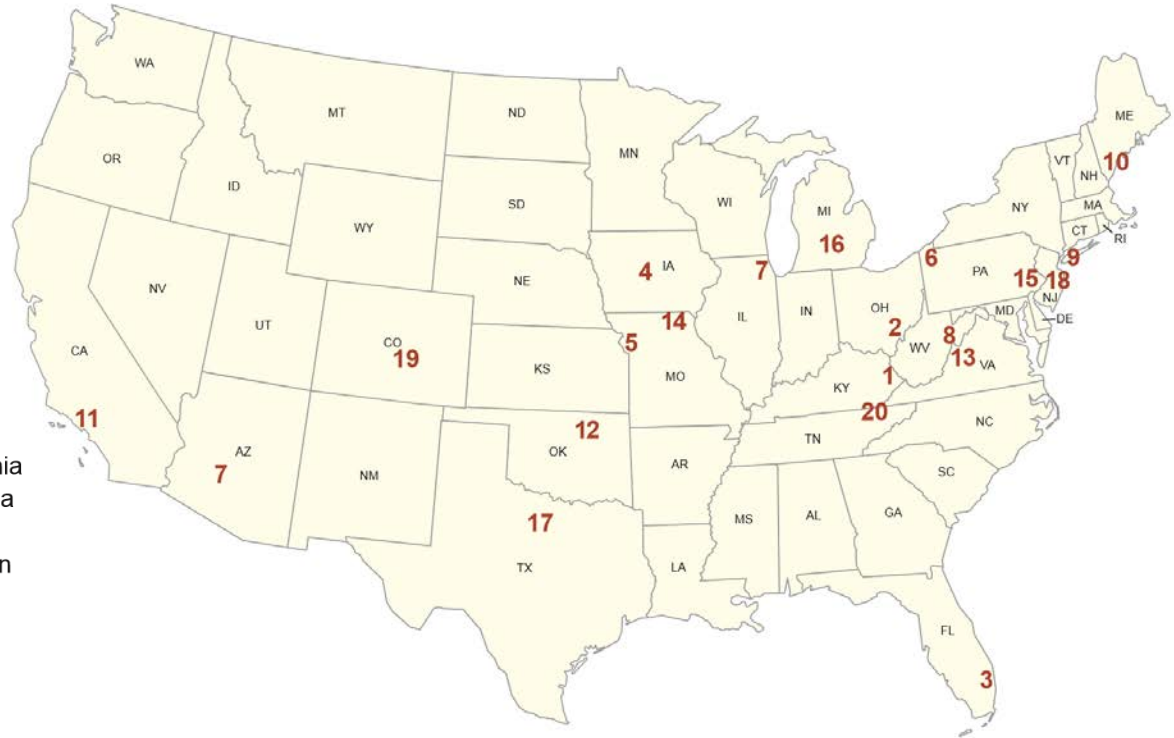
By building medical education partnerships, OPTIs enhance educational quality, facilitate sharing of educational resources, provide faculty development, foster cooperative training programs, support community-based medical education, encourage clinical research, and create strong linkages among medical schools, teaching hospitals and ambulatory training facilities.

Requirements

- Every osteopathic GME program must be in an OPTI
- Every COM must be part of an OPTI
- Every OPTI must obtain AOA Accreditation
 - Annual \$30,000+ fee
 - Routine inspections and reports
 - OPTI is the academic sponsor for all GME programs

Current OPTIs

1. Appalachian Osteopathic Postgraduate Training Institute Consortium Inc (A-OPTIC Inc), Pikeville, Kentucky
2. Centers for Osteopathic Research and Education (CORE), Athens, Ohio
3. Nova Southeastern University College of Osteopathic Medicine Consortium for Excellence in Medical Education (CEME), Fort Lauderdale, Florida
4. Health Education and Residency Training Network (HEARTland), Des Moines, Iowa
5. Kansas City University of Medicine and Biosciences College of Osteopathic Medicine Educational Consortium (KCUMB-COMEC), Missouri
6. Lake Erie Consortium for Osteopathic Medical Training (LECOMT), Erie, Pennsylvania
7. Midwestern University/OPTI (MWU/OPTI), Downers Grove, Illinois, and Glendale, Arizona
8. Mountain State OPTI (MSOPTI), Lewisburg, West Virginia
9. New York Colleges of Osteopathic Medicine Educational Consortium (NYCOMEC), Old Westbury
10. Northeast Osteopathic Medical Education Network (NEOMEN), Biddeford, Maine
11. OPTI—West Educational Consortium, Pomona, California
12. Osteopathic Medical Education Consortium of Oklahoma (OMEKO), Tulsa
13. Osteopathic Medical Network of Excellence in Education (OMNEE), Blacksburg, Virginia
14. Still OPTI, Kirksville, Missouri
15. Philadelphia College of Osteopathic Medicine (PCOM) MEDNet, Pennsylvania
16. Statewide Campus System/Michigan State University College of Osteopathic Medicine (SCS/MSUCOM OPTI), East Lansing
17. Texas OPTI, Fort Worth
18. Rowan School of Osteopathic Medicine OPTI of New Jersey (RowanSOM OPTI), Stratford
19. Rocky Mountain OPTI (RM OPTI), Parker, Colorado
20. Tennessee Osteopathic Medical Education Consortium (TOMECE), Harrogate



Problems with OPTIs

- Little consistency despite accreditation
 - Robust services versus minimal services
 - Regional footprint versus expansive geography
 - Focus on new program development vs existing programs
- Expensive and time consuming
 - Shifted work of accrediting body to the OPTI
 - Many required COM financial support (student tuition \$\$)
- Little evidence of improved outcome metrics
 - Higher quality GME programs
 - Increased retention of DO graduates
 - Improved perception of AOA GME programs

OPTIs in the SAS

OPTI's with ACGME Accreditation

PCOM MEDNet - Philadelphia PA

New York Colleges of Osteopathic Medicine Educational Consortium (NYCOMEC) - Old Westbury NY

Osteopathic Medical Education Consortium of Oklahoma, Inc. - Tulsa OK

Lake Erie Consortium for Osteopathic Medical Training (LECOMT) - Erie PA

Rowan University School of Osteopathic Medicine OPTI of New Jersey - Stratford NJ

Still OPTI - Kirksville MO

Appalachian Osteopathic Postgraduate Training Institutions Consortium, Inc. - Pikeville KY

Kansas City University - Graduate Medical Education Consortium - Kansas City MO

OPTI-West Educational Consortium - Pomona CA

Mountain State Osteopathic Postdoctoral Training Institutions - Lewisburg WV

Statewide Campus System of Michigan State University College of Osteopathic Med - East Lansing MI

OPTI's without ACGME Accreditation

Centers for Osteopathic Research and Education (CORE) - Dublin OH

Texas OPTI - Fort Worth TX

NSU-COM Consortium for Excellence in Medical Education - Fort Lauderdale FL

Northeast Osteopathic Medical Education Network - Biddeford ME

Midwestern University/Osteopathic Postdoctoral Training Institution - Downers Grove IL

Osteopathic Medical Network of Excellence in Education - Blacksburg VA

Health Education And Residency Training Network - Des Moines IA

Rocky Mountain OPTI - Parker CO

Tennessee Osteopathic Medical Education Consortium (TOMEC) - Harrogate TN

New Consortia with ACGME Accreditation

Campbell University, North Carolina

UIWSOM/TIGMER, Texas

East central Mississippi Health network, Mississippi

Fort Wayne Medical Education Program, Indiana

VCOM- Lewis Gale GME Consortium, Virginia

One OPTI Case Study



Parkview Medical Center
Pueblo, Colorado

Hospital is
new
ACGME SI



RVU/Sky Ridge Medical Center
Lone Tree, Colorado

Hospital is
new
ACGME SI



University of Wyoming
Casper, Wyoming

Was Dually
Accredited



St. Mary Corwin Hospital
Pueblo, Colorado

Was Dually
Accredited



University of Wyoming
Cheyenne, Wyoming

Was Dually
Accredited



Swedish Medical Center
Englewood, Colorado

Hospital
was already
Accredited



Peak Vista Community Health Centers
Colorado Springs, Colorado

Joined other
OPTI as SI



Idaho Physicians Clinic/Bingham Memorial
and Davis Hospital
Blackfoot, Idaho

Uncertain



RVU/Colorado Dermatology Institute
Colorado Springs, Colorado

Program to
Close

COCA Standard

- GME addressed in new Standard 10
 - Still out for comment and not approved
 - Likely will still encourage GME development
 - Previously said “Demonstrate Planning and Progress”
 - Likely will remove requirement for OPTI
 - May still require a GME Consortium
 - What does that mean?

See one GME Consortium....

Focus on GME Development

versus

Focus on consolidated oversight

GME Needs Assessment #1

Focus on New GME Development

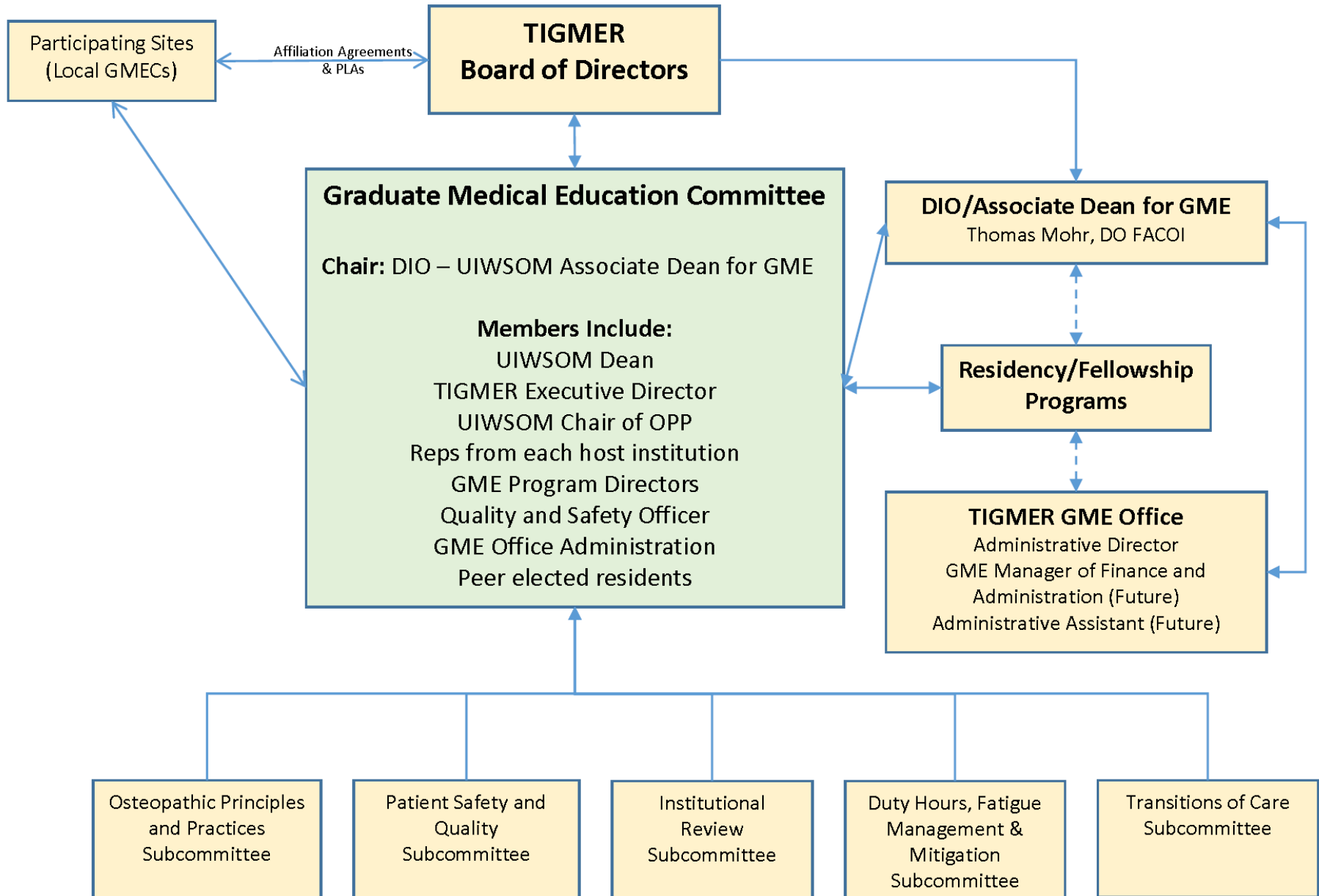
- Hospitals and clinics do not have educational infrastructure to set up new residency programs
- Hospitals concerned about costs
- Hospitals concerned about academic expertise
- Hospitals concerned about creating a new class of employees (i.e. residents)
- Hospitals mired in corporate compliance issues concerned about contracting with faculty
- University has desire to start Teaching Health Centers, Rural Programs and non-hospital-based programs



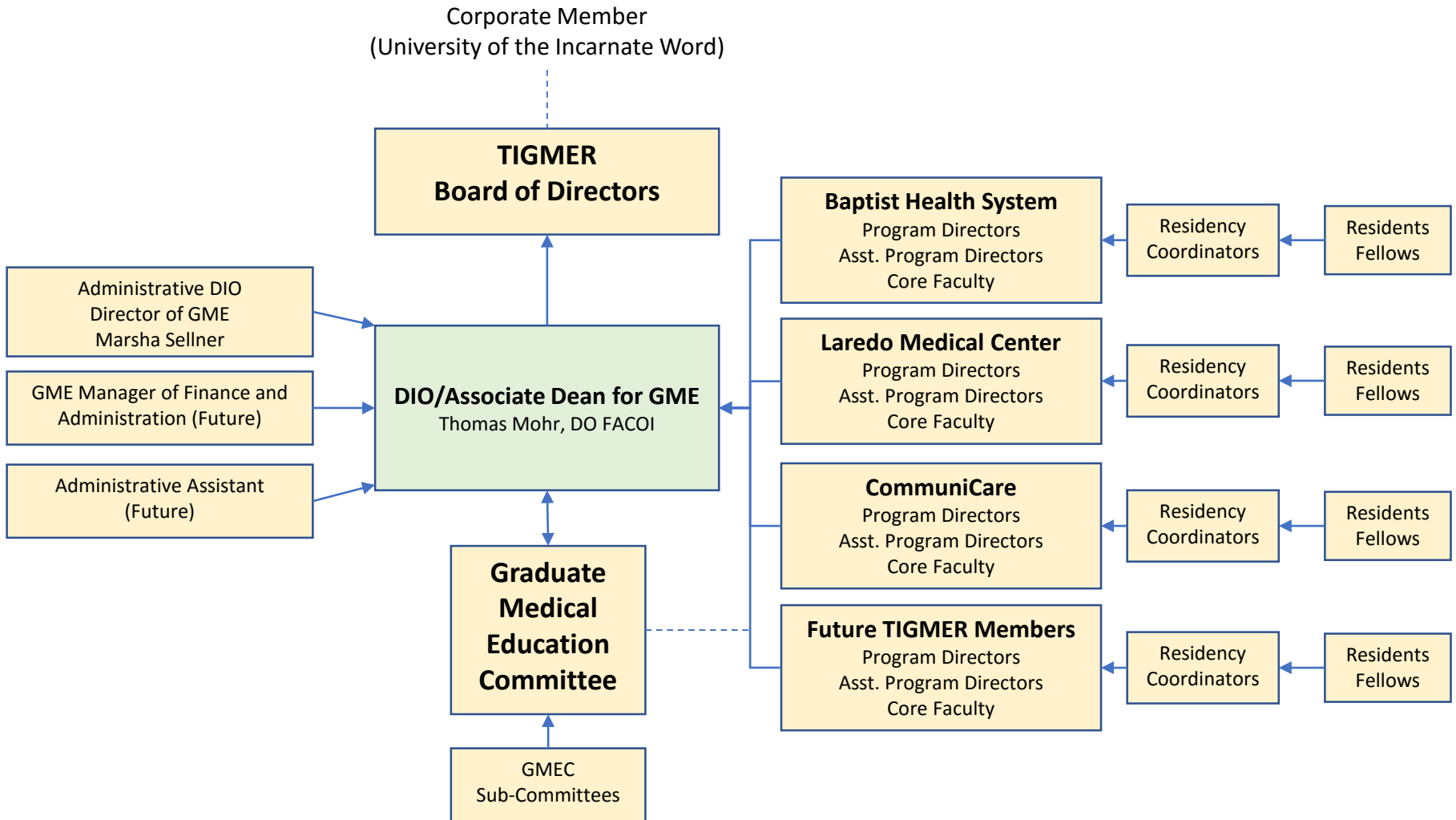
Texas Institute for
Graduate Medical Education and Research

- Established by UIWSOM in 2015 as 501(c)3 nonprofit
- UIW is sole corporate member of the Board
- UIW manages financial accounts
- ACGME Initial Accreditation as Institutional Sponsor

Position of GMEC



Organizational Chart



Design and Structure

- TIGMER provides structure as Institutional Sponsor and provides initial feasibility studies, accreditation leadership, curriculum design, GMEC.
- TIGMER shares costs of DIO's office and provides cost-sharing with UIWSOM. Obtains grants also.
- TIGMER set up to employ residents and faculty for varied programs
- TIGMER developing Teaching Health Center programs, Rural programs, and non-hospital based programs in association with hospital partners.

TIGMER GME Development



**CommuniCare
Teaching Health
Center**

FM 8/8/8

2017 Launch

AOA Approved



Laredo Medical Center

(320 Beds)

IM 8/8/8
FM 8/8/8

2018 Launch

AOA Approved



Baptist Health System

(1800 Beds)

FM 15/15/15
IM 15/15/15

2018 Launch

AOA Approved



**Southwest General
Hospital**

(320 Beds)

Psych 8/8/8

2019 Launch



UIWSOM

PMR 3/3/3
NMM 3/3/3

2019 Launch



**Abilene Regional
Medical Center**

(231 beds)

IM 8/8/8
FM 8/8/8

2020 Launch

Note: All AOA programs have already started the process of Applying for ACGME accreditation and all will apply for Osteopathic Recognition. All new programs are applying Directly with the ACGME.

GME Needs Assessment #2

Focus on consolidated oversight

- System with 77 hospitals in 3 states
- No coordination of policies and procedures or communication between programs
- Multiple requests to collaborate with other outside training programs
- No centralized mechanism to envision growth
- Concern about compliance and risk with trainees
- Desire to create a pipeline for recruiting
- Desire to promote specialties of need

Multiple Existing Partnerships

- Baylor College of Medicine
- Pontificia Universidad Catolica de Chile
- University of Incarnate Word
 - School of Osteopathic Medicine
 - School of Nursing & Health Professionals
 - Pastoral Institute
- Texas A&M University
- Texas College of Osteopathic Medicine
- William Carey University – College of Osteopathic Medicine
- St. George's University School of Medicine

Christus Health System Programs

Christus Sponsored Programs

Christus Spohn	Corpus Christi, TX	FM, EM, IM, OB, Geriatrics
Christus Santa Rosa	San Antonio, TX	FM, Sports Medicine
St. Patrick's	Lake Charles, LA	Podiatry

Training and Financial Support from Christus

Christus Spohn	Corpus Christi, TX	Pediatrics
St. Michael	Texarkana, TX	FM
Mother Frances	Sulphur Springs, TX	FM
Good Shephard	Longview, TX	IM
St. Vincent's	Santa Fe, NM	FM

Many resident rotations from other programs at these and other Christus Hospitals

Christus' Plan

- Hired corporate VP for Education and Research
 - Corporate DIO for all sponsored programs
- Consolidate approval and policies for all residents
- Establish GME Advisory Board with all partners
- Accredited as ACGME Institutional Sponsor for the entire system
- Create plan to share resources between programs
- Establish plan for new GME growth

OPTI Legacy

- GME Consortial education will continue
 - Continuation of OPTI's in their current form with AOA accreditation structure will have to change
- GME consortia have solid niches
 - Osteopathic recognition
 - Pipelines for COM graduates
 - Sustainable student rotations
 - Development of new GME programs
 - Teaching Health Centers
 - Rural Health

Questions?